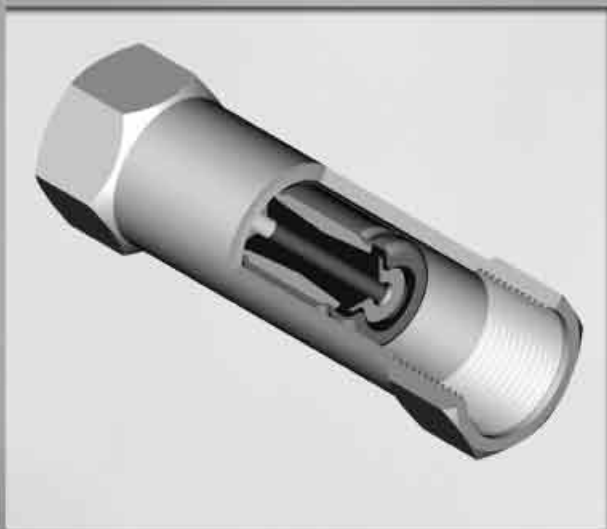


The Ogontz Pinch Trap



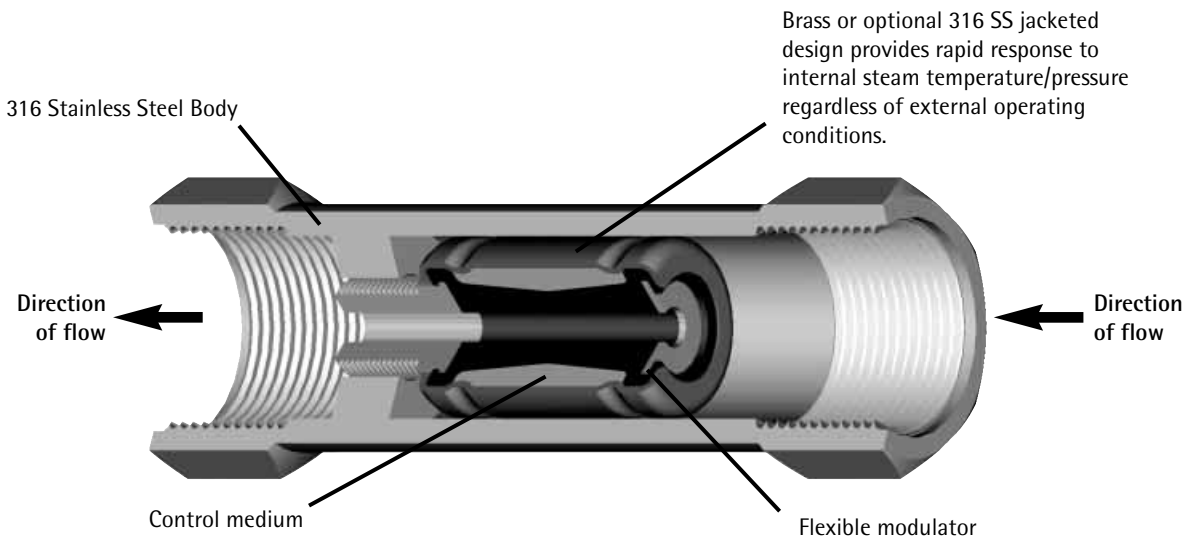
Advanced Steam
Trap Technology,
Patented Pinch
Mechanism



The Ogontz Pinch Trap



Incorporating a chemically resistant, patented, seal mechanism, the Pinch Trap automatically adjusts for optimal condensate removal.



Principles of Operation

A control medium responds to steam temperature/pressure to control the removal of condensate.

Figure 1 (open): At cold start-up the Pinch Trap is wide open and ready for passing all air, scale, and non-condensable.

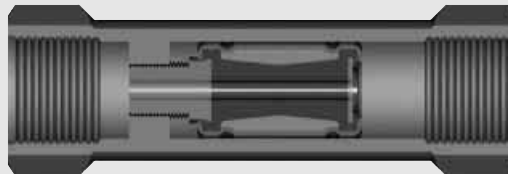


Figure 1 (Open)

Figure 2 (closed): When steam reaches the modulator, it closes.

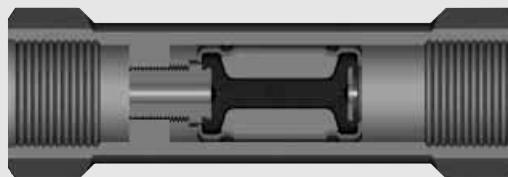


Figure 2 (Closed)

Figure 3 (modulated): After the Pinch Trap closes, the variable passage modulates in response to the condensate load. The passage adjusts to the load requirements.

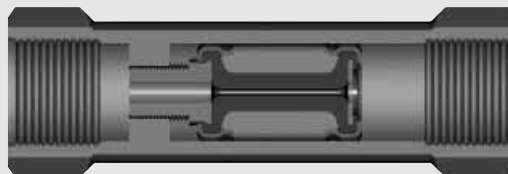
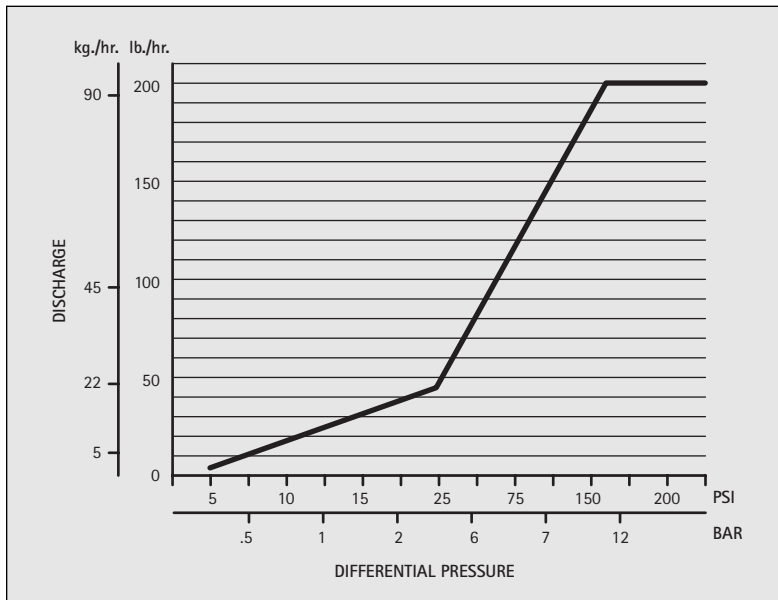


Figure 3 (Modulated)

Model OPT – for saturated steam systems only

Fixed condensate discharge temperature of ~240°F (115C)

Model OPT 1-25 has a discharge temperature of ~200F (93C)



Applications

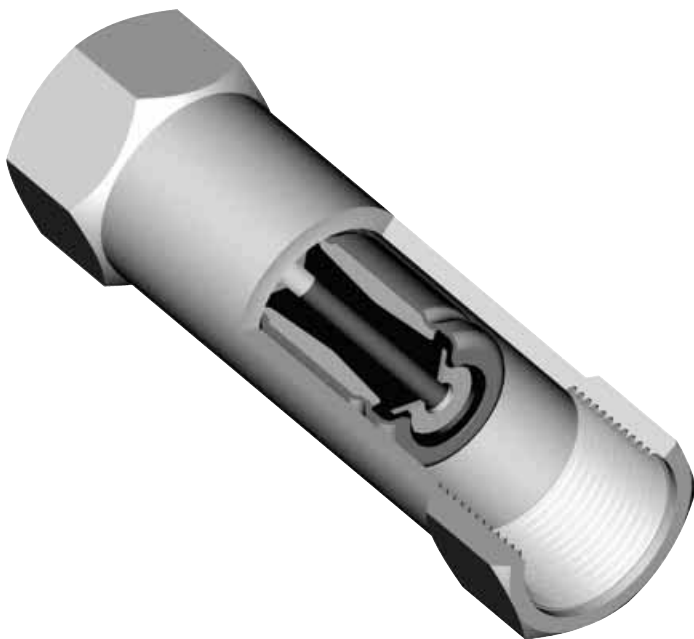
- Drip legs
- Winterizing steam tracing
- Process steam tracing
- Maintaining analyzer sample lines
- Instrument enclosure heater discharge
- Autoclaves
- Radiators
- Light loads

Start-up removal up to 1,000 lb./hr. (454 kg./hr.)

Maximum condensate discharge up to 200 lb./hr. (90 kg./hr.)

Longer Lasting By Design

The self-repairing variable passage design makes the Ogontz Pinch Trap immune to etching, a common cause of steam trap failure.

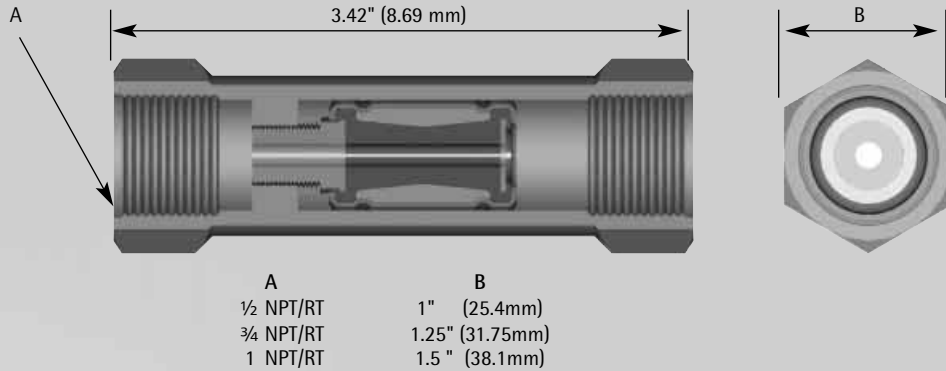


Advantages

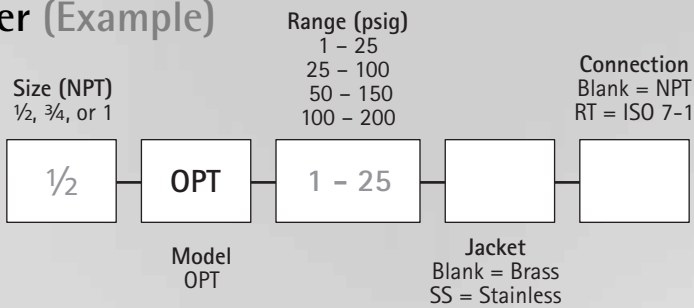
- Greater temperature control
- No moving parts
- No metal to metal seating
- Minimal live steam loss
- Back pressure insensitive
- Install in any position
- Self draining when in vertical position
- Automatic air venting

Specifications and Ordering Information

Dimensions



How to Order (Example)



The Ogontz Guarantee

We will repair or replace on a no-charge basis, F.O.B. Willow Grove, PA, any Pinch Trap units returned to us within 18 months, if found to be defective in material or workmanship.



2835 Terwood Road • Willow Grove, PA 19090 USA
 800/523-2478 • 215/657-4770 • Fax: 215/657-0460
 www.ogontz.com • info@ogontz.com

North America • South America • Europe • Asia
 Copyright Ogontz Corporation, 2006 • Bulletin #OPT-03-06