

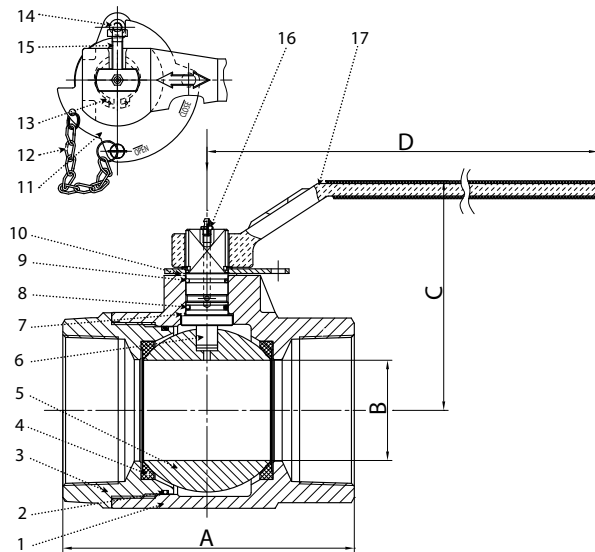


Valves, Automation & Controls

Fig. OP50DA6RV
OIL PATCH DUCTILE IRON
BALL VALVE

Design Features

- Ductile Iron Body
- 1000 psi
- Full Port
- 2 Piece
- RPTFE Seats
- Nace MR-01-75-2009 Compliant
- Heavy Duty Locking Device
- Blow-out Proof Stem
- Double O-Ring Stem Seal
- Grease Fitting for Constant Lubrication and Protection Against Corrosion and Moisture

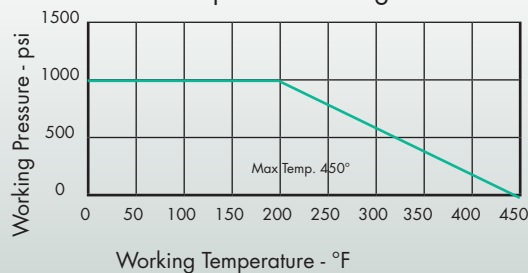


| No. | Part | Material |
|-----|----------------|--------------------------|
| 1 | Body | Ductile Iron |
| 2 | Body Seal | Viton |
| 3 | Bonnet | Ductile Iron |
| 4 | Seat | RPTFE |
| 5 | Ball | AISI 420 Stainless Steel |
| 6 | Stem | AISI 420 Stainless Steel |
| 7 | Thrust Washer | PTFE |
| 8 | Stem Seal | Viton |
| 9 | Stem Seal | Viton |
| 10 | Stem Packing | PTFE |
| 11 | Locating Plate | Steel |
| 12 | Clip Spring | Spring Steel |
| 13 | Pin with Chain | Copper & Steel |
| 14 | Handle Screw | Steel |
| 15 | Stop Bolt | Steel |
| 16 | Grease Zerk | SS201 |
| 17 | Handle | Ductile Iron |

| Size IN | Part Number | Weight LB | A IN | B IN | C IN | D IN |
|---------|----------------|-----------|------|------|------|-------|
| 1 | SVOP50DA6RV010 | 4.3 | 4.02 | 1.00 | 3.39 | 6.65 |
| 2 | SVOP50DA6RV020 | 18.0 | 6.00 | 2.00 | 5.51 | 10.00 |
| 3 | SVOP50DA6RV030 | 42.3 | 8.74 | 3.00 | 6.87 | 15.00 |

Technical Information

Pressure Temperature Ratings



USA 800-766-0076

Fax 323-890-4456

www.smithcooper.com

www.sharpevalves.com

Los Angeles, CA

Chicago, IL

Atlanta, GA

Vancouver, WA

Houston, TX