



# Series 96 Wing Nut



TWO-WAY

The Series 96 coupling is a heavy-duty wing nut coupling designed for use in hydraulic lines where dry break and minimum air inclusion are required. It is ideal for hydraulic dump trucks, oil field equipment, spreading equipment and applications requiring the ability to connect and/or disconnect under pressure. Body sizes are 3/4", 1" and 1 1/4".

### Features

- Non-spill double shut-off with minimum air inclusion
- Connect/disconnect under pressure
- Corrosion resistant brass body
- Plugs can be bulkhead mounted
- Interchanges with other manufacturers' couplings

### Standard Materials

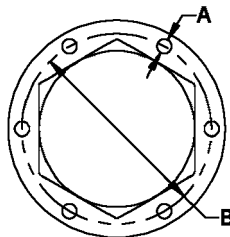
- Brass body (socket & plug)
- Zinc plated steel wing nut (socket)
- Stainless steel springs
- Buna-N (Nitrile) seals

### Options

- Dust caps and dust plugs (See page 69)
- Bulkhead mounting flanges

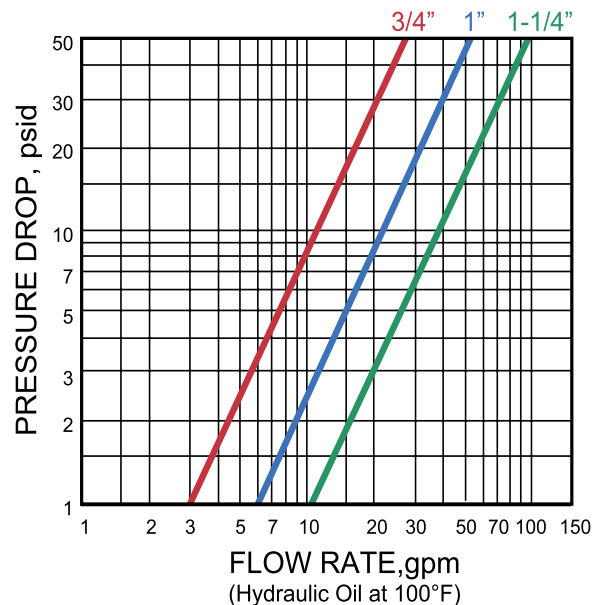
### Bulkhead Mounting Flanges

Body Size (inches)	Part No.	Diameters (inches)	
		Bolt Hole A	Bolt Circle B
3/4"	FL96-075	0.201	2.13
1"	FL96-100	0.201	2.38
1 1/4"	FL96-125	0.201	2.63



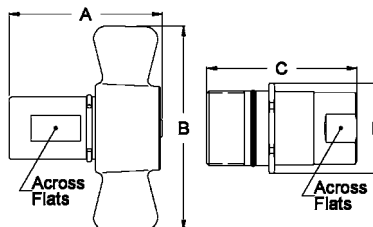
### Rated Pressure

Body Series	PSI	BAR
3/4"	3,000	207
1"	3,000	207
1 1/4"	2,750	190



### Sockets

Body Size	Part No.	Thread Size NPTF	Dimensions		
			A	B	Across Flats
3/4"	96-S31	3/4-14	3.09	4.06	1.15
1"	96-S36	1-11 1/2	3.78	4.45	1.44
1 1/4"	96-S41	1 1/4-11 1/2	3.97	5.20	1.78



### Plugs

Body Size	Part No.	Thread Size NPTF	Dimensions		
			C	D	Across Flats
3/4"	96-P31	3/4-14	3.10	1.78	1.31
1"	96-P36	1-11 1/2	3.55	2.00	1.56
1 1/4"	96-P41	1 1/4-11 1/2	3.71	2.38	1.88